



Thread Guides for DTY Process



HIGH TECH CERAMICS IN DTY PROCESS ENGINEERING

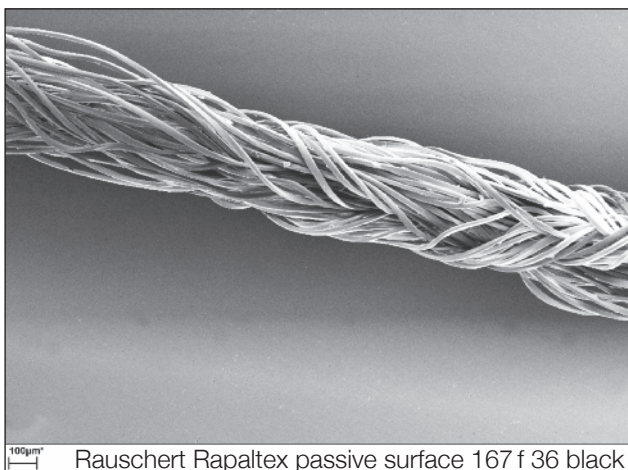
All filament contacting ceramic components located in the twisting zone between delivery shaft W1 and W2 are mainly responsible for the performance level in terms of productivity, service life and DTY quality.

Considering the fact that pretty abrasive solution dyed yarns are becoming more and more important, especially in automotive application, "real good" ceramic components are badly needed. Our high grade RAPAL 300 Al₂O₃ ceramic material fulfill the demanding requirements in every respect.

RAUSCHERT completed its full range of DTY components extensively tested and proven in production environments.

The components in particular

- Completely redesigned TWIST STOP
- New designed upper heater roller guide with metal insert and press-fit assembly for removing friction heat because of better thermal conductivity
- Entrance and exit guide of the heater
- New designed entrance and exit guide of the cooling plate
- Entrance roller guide of the spindle with metal insert and press-fit assembly for removing friction heat because of better thermal conductivity
- Complete Spindle - Set
 - Entrance Disc
 - Working Disc
 - Exit (knife) Disc

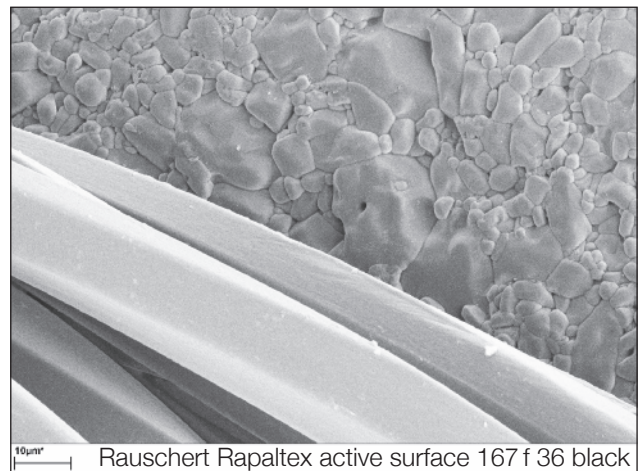


In regard to suitable surface engineering we differ:

- PASSIVE SURFACE CHARACTERISTIC
"Mirror like" surface offering the lowest possible friction coefficient to the high twisted filament bundle
Main Task: Precise guiding without damaging the filaments at speeds up to 1000m/Min.

Picture: PES 167/36 carbon black on surface of exit knife disc

- ACTIVE SURFACE CHARACTERISTIC
"Structured" surface
Main Task: Inserting twist gently without generating "snow"
Typical twist Levels: PES 167 dtex appr. 2500 t/m
PA 22 dtex appr. 5500 t/m
Picture: 4.6 dpf PES Carbon Black on surface of RAPALTEX Working Disc



All components together are resulting in:

- Excellent yarn properties
- Superior DTY end-to-end uniformity (low CV's)
- Uniform dyeability
- Extended cleaning and maintenance cycles
- Longer life-time of the individual components
- good efficiencies at high machine speeds

Thread Guides for DTY-Process



Twist stop
Part No. 390809P/87069



Upper heater roller guide
Part No. 390824P/87044



Entrance and Exit Guide of heater
Part No. 390262/1P



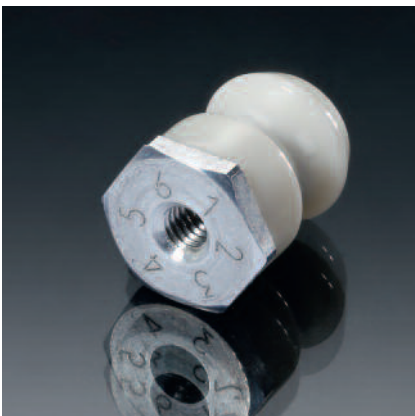
Entrance and Exit Guide of the cooling plate
Part No. 387049



Roller
Part No. 390101P



Rotating roller guide
Part No. 390362/1AZP/87071



Entrance roller guide of the spindle
Part No. 390637/EK01020



Complete spindle set for all spindles Entrance Disc, Working Disc, Knife Disc



Rauschert at a Glance



Technical Ceramics



Electroceramics



Ceramics for lighting



Ceramic components for textile machines



Ceramics for mechanical engineering



High temperature ceramics



Infrared heater plates



Ceramic honeycombs



Welding back-ups



Porous wicks



Ignition components



Ceramic coating



Ceramic sealing and regulation discs



Ceramic parts for pumps



Ceramic components



Plastic Injection Moulding



2-component-plastic-parts



System components



Assemblies (ceramics/metal/plastic)

Rauschert Thread Guides for DTY Process

Take advantage of the Rauschert experience!

The Thread Guides for DTY Process belong to the textile ceramics business unit.

The production of ceramic yarn guides is a major business activity for Rauschert.

The Yarn Guides Product Division is very successful and has expanded greatly. Our goal is to be a competitive supplier in the marketplace. Management and employees are constantly striving to improve the quality of our products and efficiency of production.

The representatives for the Yarn Guides Product Division are based in Pressig/Germany and Shanghai/China.

Pressig is located 120 km north of Nuremberg and can be reached via Autobahn A9 and A73.

Rauschert Textile Ceramics (Shanghai) Co., Ltd was founded in 2003 and is a supplier of textile ceramics for the Chinese market.

With more than 100 years experience in supplying industrial customers Rauschert can also be a reliable partner for you.

With 1200 employees in 12 manufacturing plants worldwide Rauschert is meeting today's international challenges.

Please request our literature or visit us on our website!

www.rauschert.com

Send us your inquiries!

Rauschert
Heinersdorf-Pressig GmbH
Postfach 1162
D-96329 Pressig

Phone +49 (0)9265-78-0
Fax +49 (0)9265-78-10899
email info@prg.rauschert.de

Rauschert Technical Ceramics (Shanghai) Co., Ltd
Section A, Second Floor,
No. 55 Xi Ya Road,
Waigaoqiao Free Trade Zone,
Shanghai 200131, China

Phone +86 (0)21 50643668
Fax +86 (0)21 50462220
email sales@rauschert.cn

Experienced, Flexible, Reliable.
Rauschert