

HEBERLEIN® AIRSPLICER-40-2.

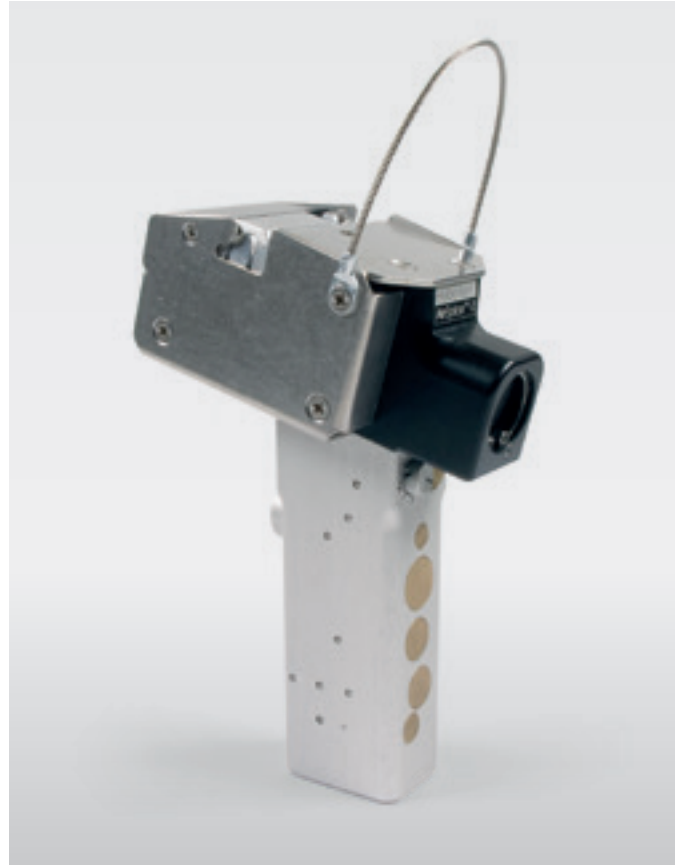
YARN SPLICER.

HIGH QUALITY KNOT-FREE JOINING OF FILAMENT YARNS INCLUDING GLASS FIBRE.

The Heberlein AirSplicer-40-2 enables the best splicing quality with flat, clean bound yarn ends with the highest strength. Suitable for yarns used for magazine creeling, drawing and twisting processes or for fabric manufacturing.

Splicing of multifilament yarns

During splicing the ends of two yarns are intermingled by using compressed air. The resulting joint exhibits high uniformity and base yarn strength. In contrast to a knotted joint, a splice causes less problems in the downstream processes.



Features and Benefits

- ▶ **The automatic splice cycle guarantees stable operator independent quality**
- ▶ **Robust design**
Hard wearing and long lasting use
- ▶ **Easy operation under extreme conditions**
- ▶ **Knot free joining from 800 up to 17 000 dtex and glass fiber rovings from 400 up to 2 400 tex**
- ▶ **Easy operation**
Splicing time can be easily set
- ▶ **Customer service**
Static material testing machine to optimize splicing strength is available

Saurer Components AG

Bleikenstr. 11, 9630 Wattwil, Switzerland
T +41 71 987 44 44, F +41 71 987 44 45
info.heberlein@saurer.com · www.saurer.com

January 2016
Saurer Components, Switzerland
becomes

HEBERLEIN AG

Heberlein® AirSplicer-40-2

Range of Application

| Type ¹ | Synthetic filament yarns [dtex] | Cellulose filament yarns [dtex] | Glass fibers [tex] | Dyneema® [dtex] |
|-------------------|---------------------------------|---------------------------------|--------------------|-----------------|
| C | 3000 - 6000 | | 400 - 600 | |
| B | 5000 - 9000 | | 600 - 900 | |
| A | 7000 - 13000 | | 900 - 1600 | |
| O | - 17000 | | - 2400 | |
| 1 ² | - 17000 | | - 2400 | |
| 2-F | 900 - 1800 | 900 - 1800 | 70 - 200 | - 800 |
| 2-E | 1800 - 2500 | 1800 - 2500 | 200 - 400 | - 1800 |

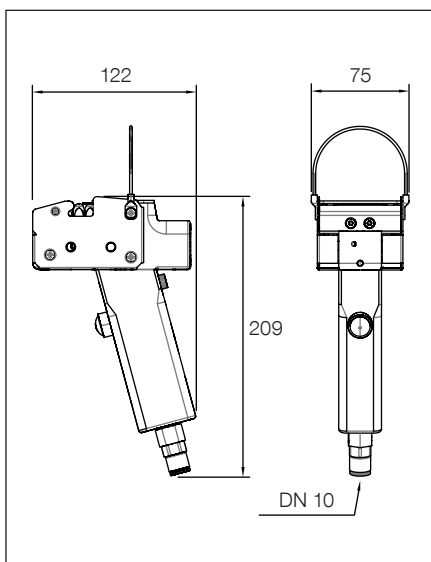
¹ Blow chamber (Splicing jet insert)

² Suitable for high single filament count

Optimal splicing requires a combination of the correct blow chamber, ideal time and air pressure for the type and titre of the yarn.

It is possible to splice yarns over 7 dpf or with more than 150 TPM (Turn Per Meter), subject to trial. We offer optimisation trials for your yarns.

Dimensions in mm



Weight 1140 g

Accessories



Stands with foot activation switch

Compressed air requirements

- Air pressure (gauge): 4 - max. 7 bar**
- Max. residual oil: 0.1 mg/m³ (class 2*)
 - Max. residual particles: (class 2*)
 - Particle size 1 µm
 - Particle density 1 mg/m³
 - Max. residual water: (class 5*)
 - Residual water 7.732 g/m³
 - Dew point + 7 °C

* According to DIN ISO 8573-1